

A0720020 Aberdeen S3 WW

Technical specifications:

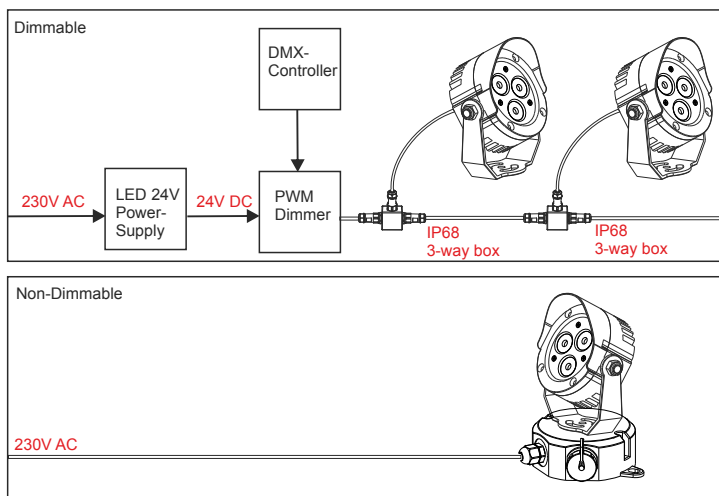
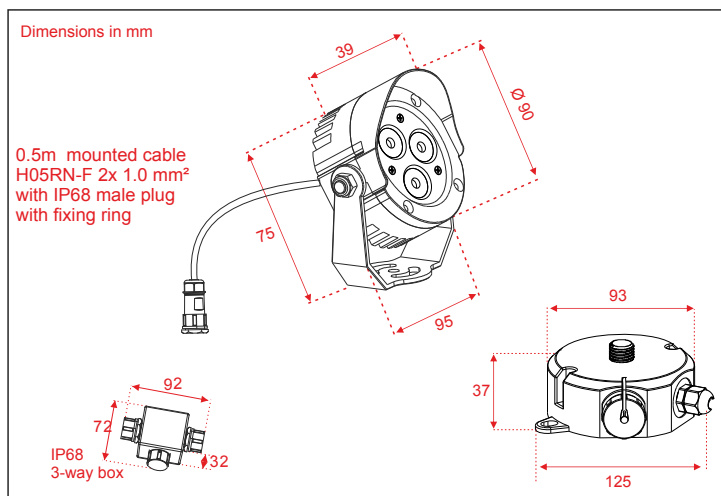
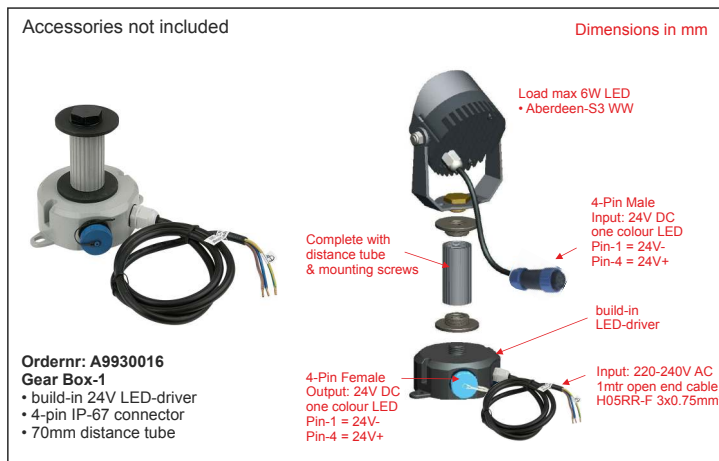
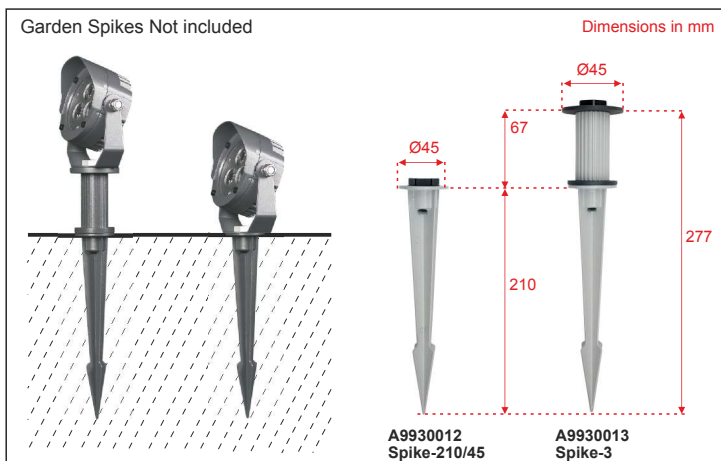
LED system: 3x 2W warm-white LED
 Beam angle: 15°
 Power consumption: 6W / 137Lm
 Power connection: 24V DC by LED-Power supply
 Housing + mountingbase: Grey powder coated die-casting aluminum
 (T=50-55µm Adhesion of I)
 Glass: Tempered glass T=3mm
 Lens: optical lens, efficiency >85%
 Ambient Temperature: -0°C / +40°C
 Cooling system: Convection
 Included mounted cable H05RN-F 2x 1.0mm² L1.5m with IP-68 mounted male plug

Attention: This high power LED fixture cannot be installed under water

KG	Voltage	Class		LED-Power	15°	IES-File	Ø 90 mm W 95 mm D 39 mm
0.68	24V DC	Class III	IP-65	3x 2W	Symmetric LED-Lens	available	Dimensions

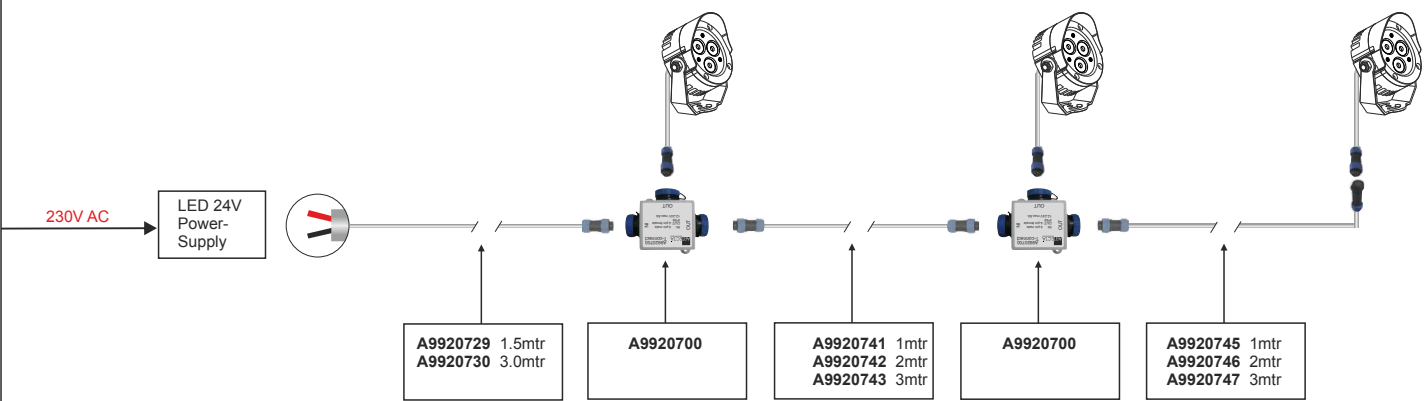


4-pin male IP68

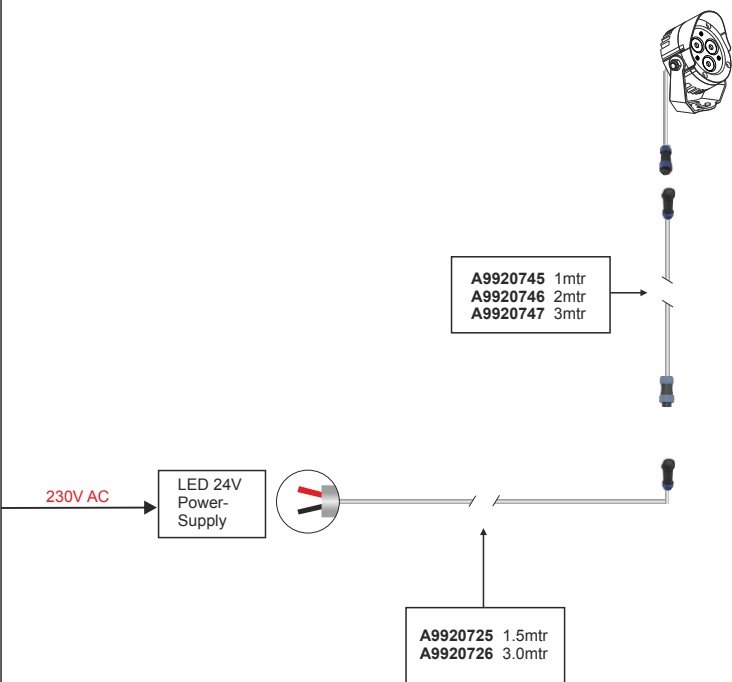


Garden Lights

Low voltage connection



Low voltage connection



IP68 4-pin Chassis
A9920707 male
A9920708 female

IP68 4-pin Connectors
A9920709 male +fixing ring
A9920712 male
A9920711 female + fixing ring
A9920710 female

IP68 4-pin Extension Cables
male+fixing ring to female+fixing ring
(T-connect to T-connect)
A9920741 1mtr
A9920742 2mtr
A9920743 3mtr

IP68 4-pin Extension Cables
male connector+fixing ring to female connector
(T-connect to Fixture)
A9920745 1mtr
A9920746 2mtr
A9920747 3mtr

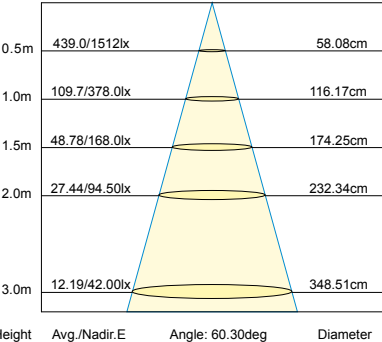
IP68 4-pin 24V Connecting Cables
female connector with fixing ring to 2 inner wires open end
(Powersupply to Fixture)
A9920725 1.5mtr
A9920726 3.0mtr

IP68 4-pin 24V Connecting Cables
female connector to 2 inner wires open end
(Powersupply to T-connect)
A9920729 1.5mtr
A9920730 3.0mtr

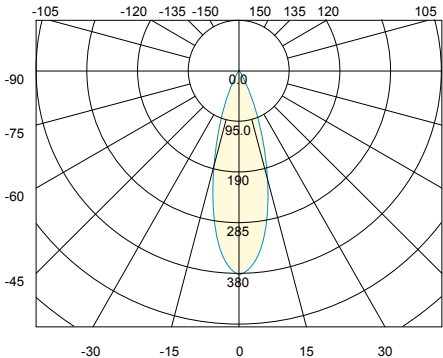
A9920700 T-connect IP68
1x 4-pin male
2x 4-pin female



Flux out: 116.3 lm

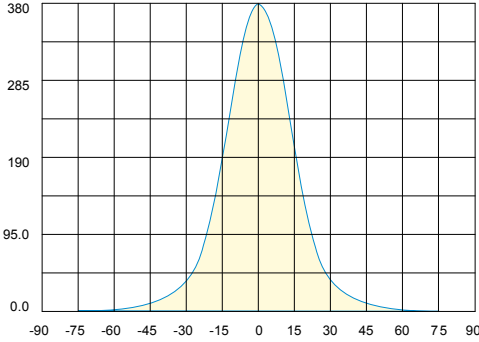


Intensity(unit:cd)



Intensity(unit:cd)

$\theta_{av}(50\%)=30.2$



High voltage connection

